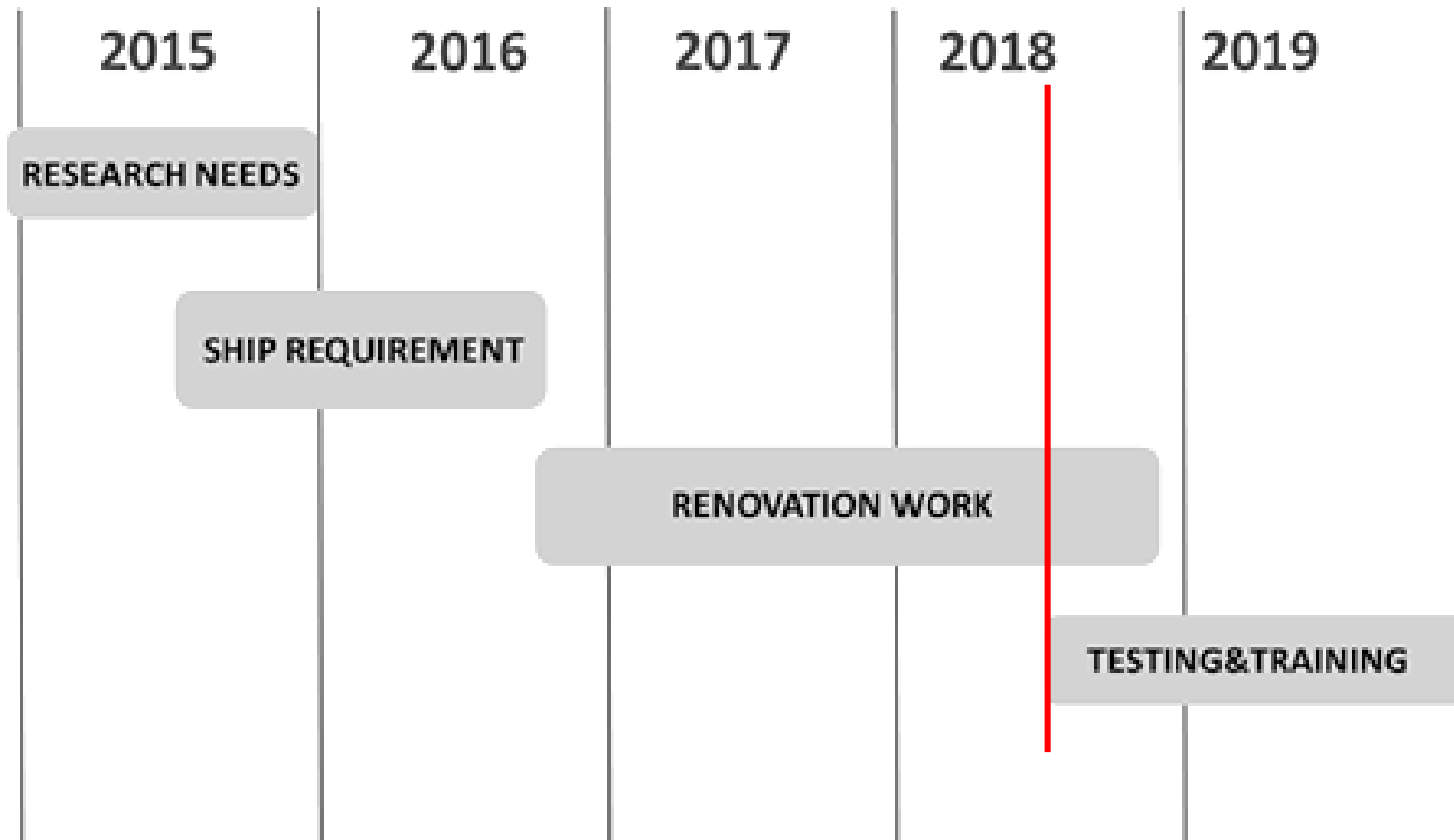


Modernization of RV Aranda



20 th ERVO meeting
University of Malta, Valletta, 12-14th June 2018
Jukka Pajala & Juha Flinkman

Modernization schedule



ARANDA2020

Open the box

..or a can of worms...



Dollhouse



Cables between the ship parts



Rust rust rust



Removing old parts



Closing the box

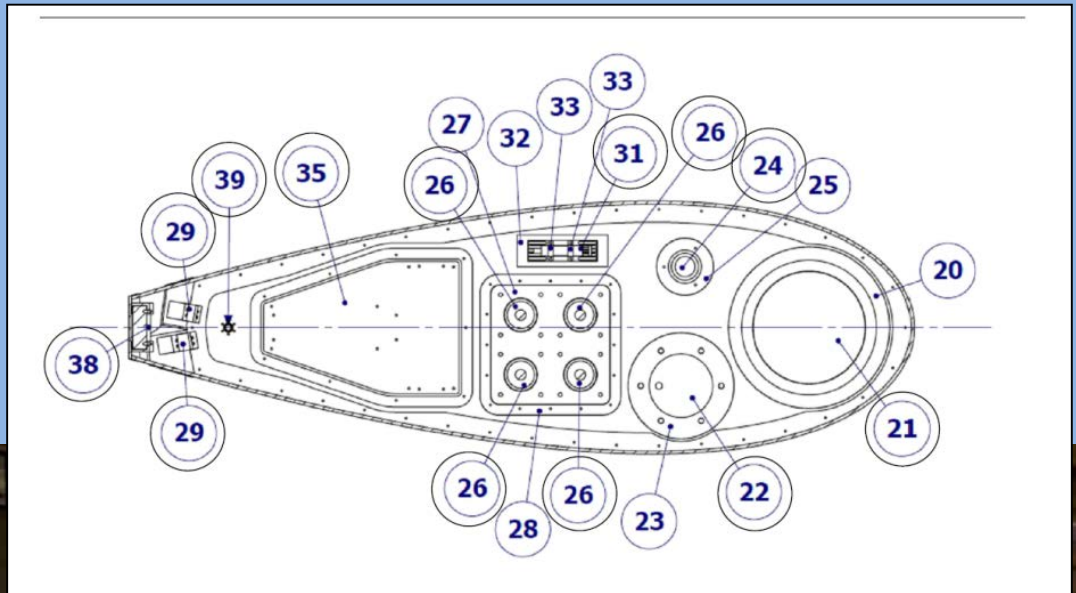


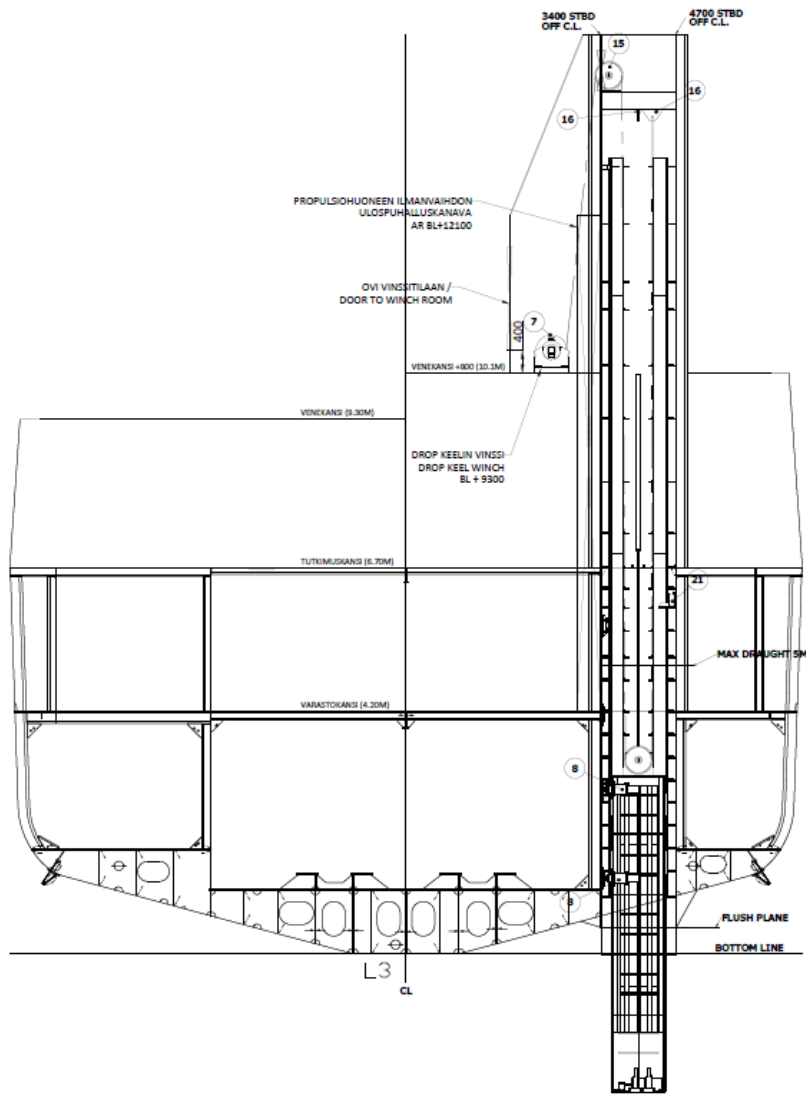
New stern form





Drop keel





SECTIONAL VIEW
(KEEL 2.4 M OUT)

OHAAMON KATTO (18.90M)

OHAUSKANGS (14.20M)

HELIKOPTERIKANGS (11.80M)

VENEKANGS +800 (10.3M)

TUTKIMUSKANGS (8.70M)

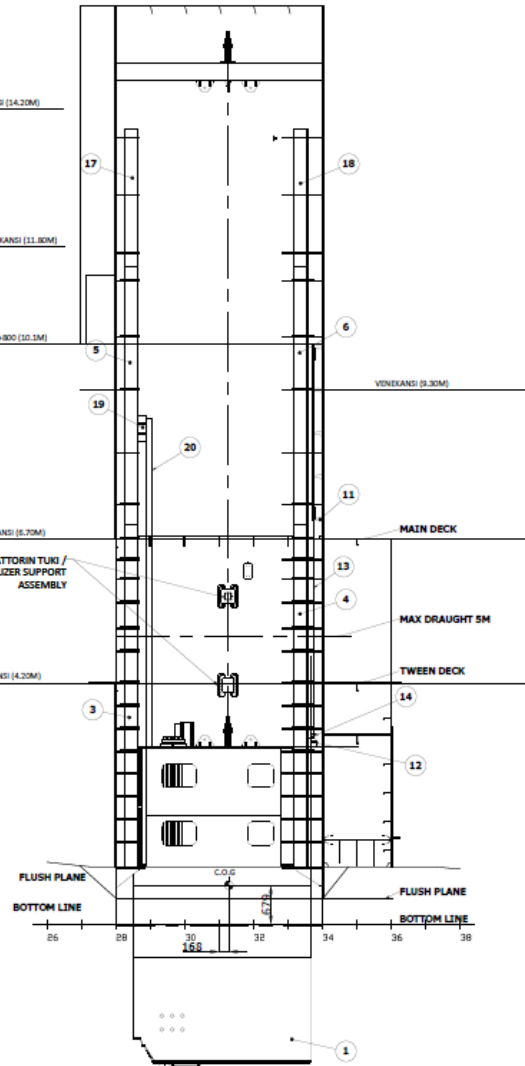
VARASTOKANGS (4.20M)

FLUSH PLANE

BOTTOM LINE

SIDE VIEW 4700 OF CL SB
(KEEL 2.4 M OUT)

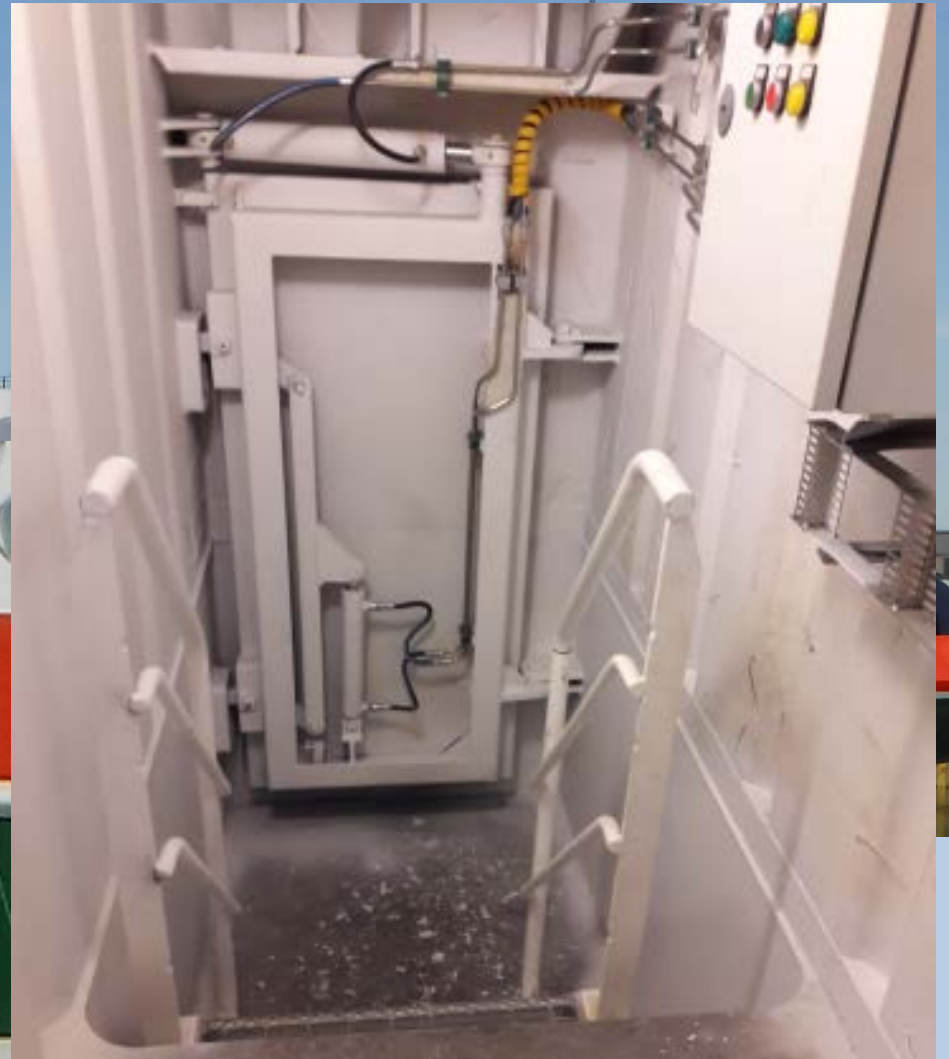
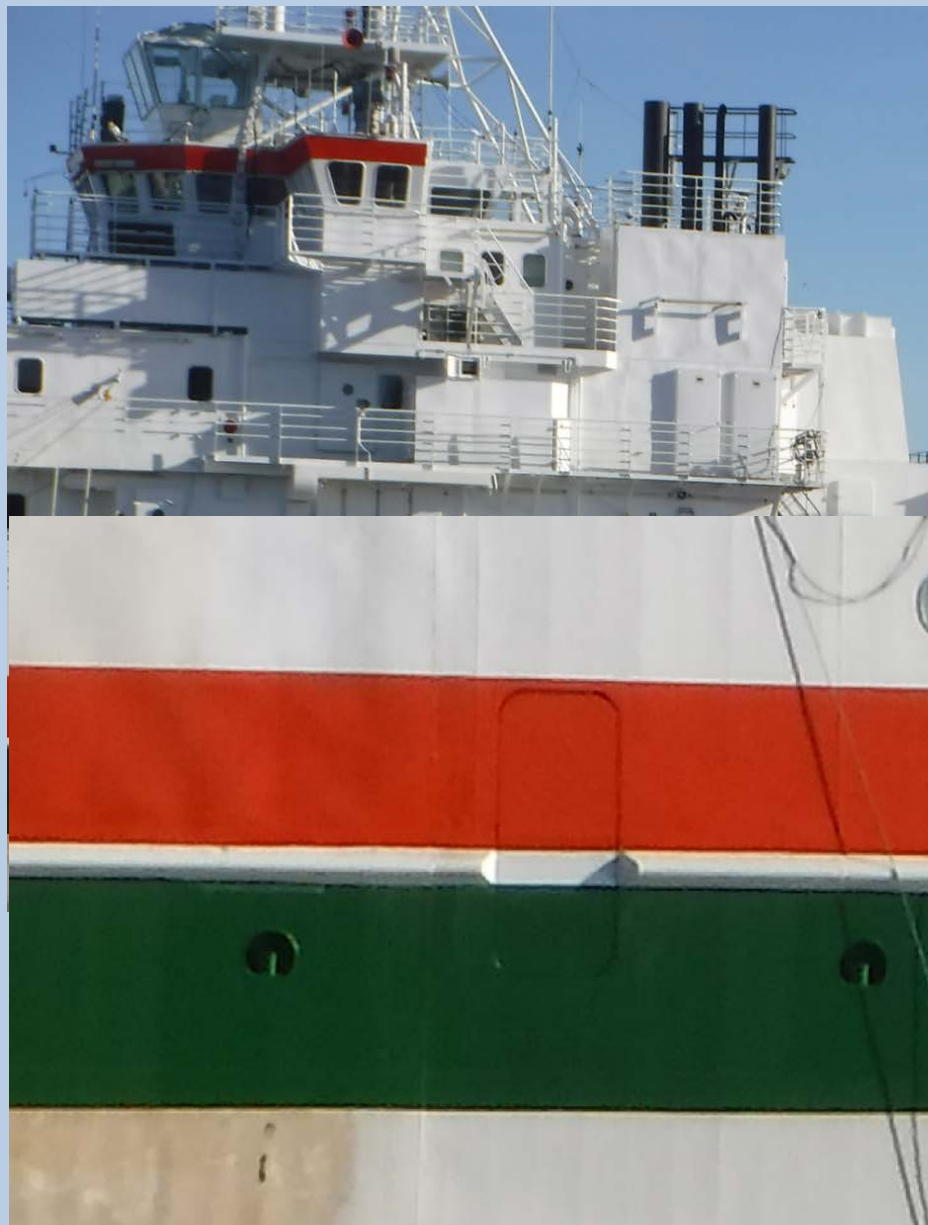
ITEM	CODE	Descr.	QTY
1	440-10-002	Drop Keel Assembly	1
2	440-01-003	Roll Bracket	1
3	440-01-004	Att structural rail	1
4	440-01-005	Fore structural rail	2
5	440-01-006	Att maintenance rail	1
6	440-01-007	Fore maintenance rail	2
7	S-01-01-004	Hydraulic winch	1
8	P010-10-001	Hydraulic Stabilizer	2
9	440-10-004	Stabilizer Support Assembly (Pole Type)	2
10	440-10-003	Stabilizer Support Assembly (Pole Type)	2
11	440-10-005	Sensor plate cover assembly	1
12	AT-15-01-001	KARM-30 rod end bearing	1
13	440-01-008	Sensor plate	1
14	440-01-002	Sensor plate joint	1
15	440-10-006	Pulley Assembly	1
16	440-01-003	Maintenance safety lug	3
17	440-01-007	Att removable rail	1
18	440-01-008	Fore removable rail	2
19	440-01-009	Cable chain support (trunk)	1
20	440-01-000	Cable chain	1
21	440-10-011	Safety stopper	1
22	440-01-008	Maintenance switch installation	1



RY ARANDA DROP KEEL YLEISJÄRJESTELY DROP KEEL GENERAL ARRANGEMENT		
DRAWING NO: B.6105.2220.8010	SCALE: 1:40	SHEET NO: A 3 (5)



Side door



Observatory



For future cabling



Deck gear maintenance



New propellers



Interior stylizing



Spirit of the work



So, full ahead, to meet
the challenges the future
may bring!

Thank You!

